


 Quality Child Care Niagara


**Quality Child Care Niagara
Community Conversation Café**
Community of Practice in Your Program



Priyanka Tan, QCCN Coordinator
Katie-Lynn Parkinson, QCCN Program Consultant


 Niagara Region
COMMUNITY SERVICES

 eccdc

 Quality Child Care Niagara

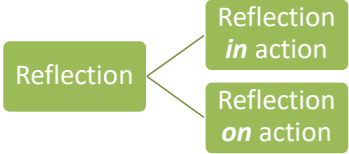
Agenda

- Welcome and Network Introduction
- What is Reflective Practice?
- Critical Reflection and Collaborative Inquiry
- Reflective Teacher and Reflective Questions
- Action plan

 Quality Child Care Niagara

Reflection Definition

Reflection is an active process of witnessing one's own experience in order to examine it more closely, give meaning to it, and learn from it.



```

graph LR
    Reflection[Reflection] --- ReflectionInAction[Reflection in action]
    Reflection --- ReflectionOnAction[Reflection on action]
  
```



The College defines **reflective practice** for RECEs in this way:

An approach used by RECEs to analyze and think critically about their professional practice with the intention to better understand and improve their practice. Reflective practice is thoughtful, action-oriented and often, a collaborative effort. RECEs use reflective practice to plan, evaluate their strengths and challenges, make decisions and create change, if necessary. Self-reflection, critical reflection and collaborative inquiry are all important elements of reflective practice

Code of Ethics and Standards of Practice, 2017



Reflective Practice







Video Reflection

- How does your centre make time for group reflections?



Why should I engage in Reflective Practice?

- Better able to understand your practice and act to improve it
- Promotes self-awareness
- Encourages a re-thinking
- Reveal forgotten strengths and skills
- Effective in your work
- Empowering and supports your well-being and leadership development
- Valuable contributor and leader
- Coping strategies and problem solving skills
- Build resiliency
- Honours your professional knowledge and experience



How do I engage in Reflective Practice?

- Think critically about your professional practice:
 - Roles and responsibilities
 - Daily practice choices and actions
 - Interactions
 - Current practice environment(s)
 - Observations of children
 - Knowledge of families
 - Ongoing learning choices and opportunities
 - Knowledge of community and the sector



How do I engage in Reflective Practice?

- Engage in deeper reflection and analysis:
 - Identify current issues, trends, policies and research that impact your practice
 - Listen to the perspectives
 - Observe children
 - Question your beliefs and assumptions
 - Challenge your daily practice
 - Observe and monitor the outcomes of new strategies in practice
 - Identify your strengths, challenges, and analyze
 - Questioning what is happening in your practice and engage
- Keeping a reflective journal





“Build positive relationships with colleagues by demonstrating respect, trust and integrity. They support, mentor and collaborate with colleagues, including students aspiring to the profession .”

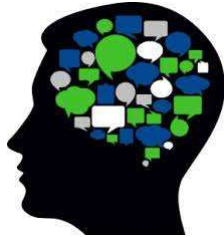
- The College of Early Childhood Educators





"We do not learn from experiences... we learn from reflecting on experience."

- John Dewey





Action plan

- How can I challenge myself and my colleagues to continuously reflect on practices and to investigate questions and ideas?



Resources

- The College of Early Childhood Educators – Reflective Practice and Self-Directed Learning (CPL Resource)
https://www.college-ece.ca/en/Documents/CPL_Reflective_Practice_Self_Directed_Learning.pdf
- The College of Early Childhood Educators – Code of Ethics and Standards of Practice
https://www.college-ece.ca/en/Documents/Code_and_Standards_2017.pdf
- Becoming a Reflective Teacher
<https://www.rrcc.edu/sites/default/files/early-childhood-education-BecomingaReflectiveTeacher.pdf>
- Reflective Practice: Making a Commitment to Ongoing Learning
<http://thespoke.earlychildhoodaustralia.org.au/reflective-practice-making-commitment-ongoing-learning/>
- Continuous Professional Learning for Early Childhood Educators
<https://tecribresearch.wordpress.com/2020/06/27/continuous-professional-learning-for-early-childhood-educators-reflective-practice-and-collaborative-inquiry/>
- A Thinking Lens® for Reflection and Inquiry
https://eccdc.org/wp-content/uploads/2014/09/a_thinking_lens_bilingual.pdf



Questions?

Contact:

Priyanka Tan, QCCN Coordinator
ptan@eccdc.org
905.646.7311 ext. 306

Katie-Lynn Parkinson, QCCN Program
Consultant
kparkinson@eccdc.org
905.646.7311 ext. 314